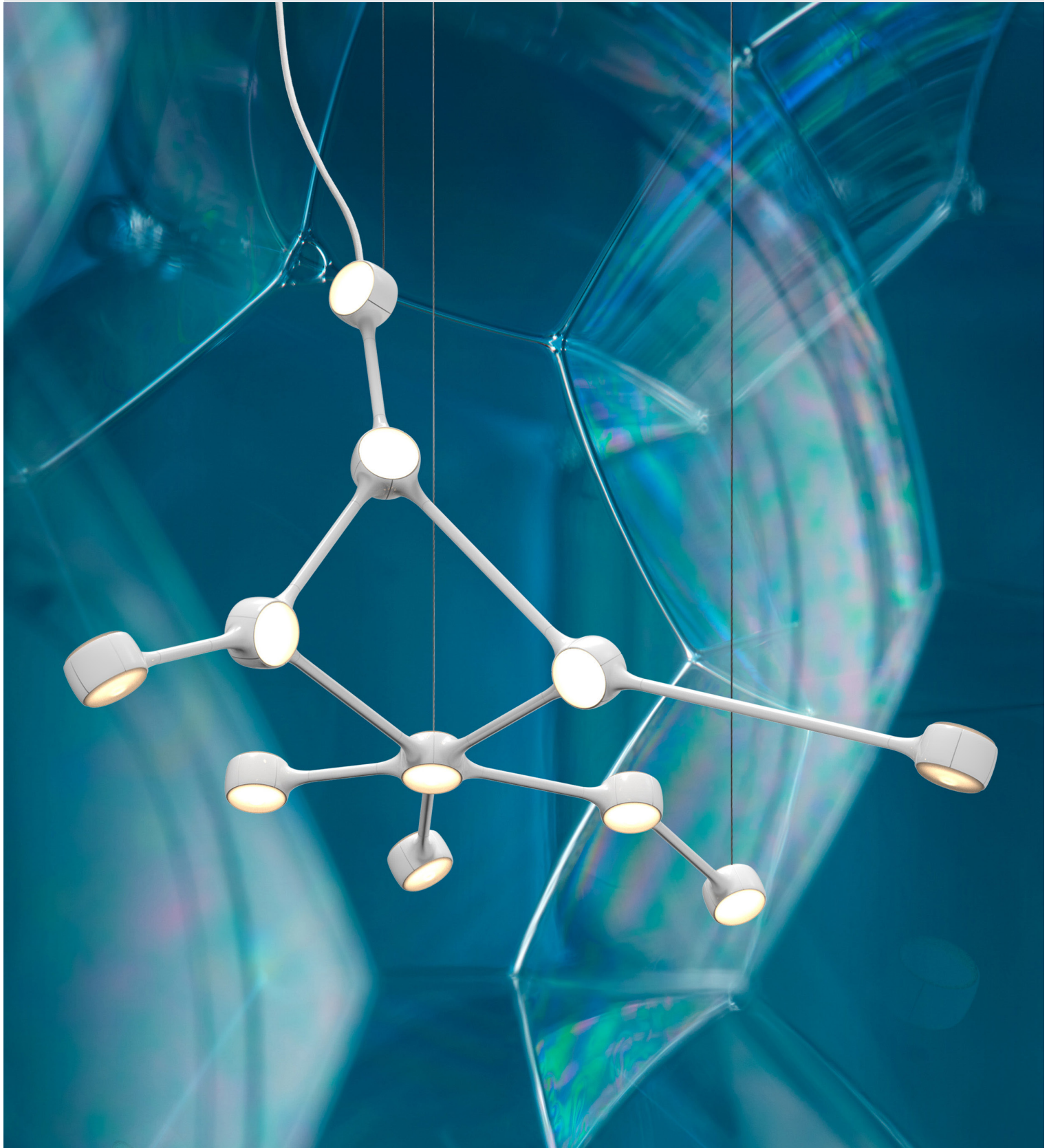


RP-E-1605

Ramus Series

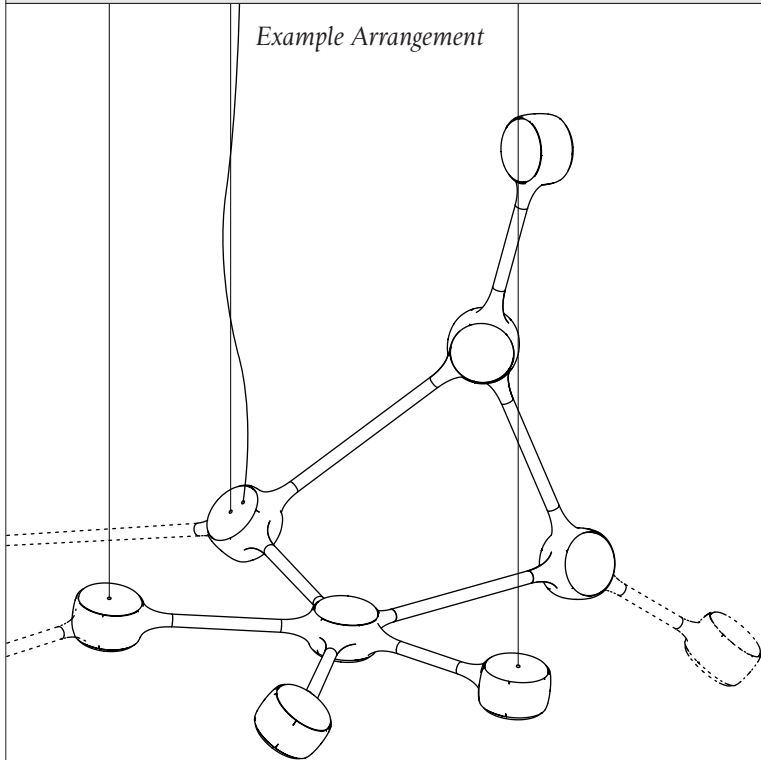
Inspired by nature's branching structures, this high-tech LED array is perfect for building 3D sculptural forms as pendants or wall installations. Fabricated from cast aluminium and available in a variety of finishes. Technically brilliant.



Ramus Series

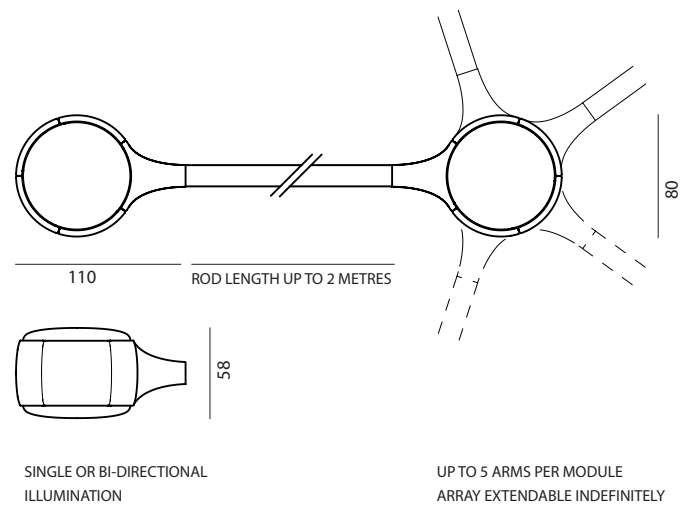
SELECTION 1 - MODULE CONFIGURATION

Example Arrangement



ARRANGEMENTS FULLY CUSTOMISABLE
DIMENSIONS IN MILLIMETRES

Module Dimensions



SELECTION 2 - FINISH

Satin White

Satin Black

Polished Aluminium

Polished Gold

ADDITIONAL POWDERCOAT AND PLATED FINISHES AVAILABLE ON REQUEST

PRODUCT TECHNICAL SPECIFICATION

NAME:	RAMUS SERIES
DESIGN:	RAKUMBA
STYLE:	PENDANT / WALL LIGHT
MATERIALS AND FINISH:	STRUCTURE - POWDERCOATED, POLISHED OR CUSTOM PLATED ALUMINIUM DIFFUSER - FROSTED ACRYLIC
LIGHT SOURCE:	SINGLE-SIDED MODULE: DIMMABLE TRIDONIC LED // 3W // 350 lm (MODULE) ~250 lm (TTL) // 3000K BI-DIRECTIONAL MODULE: DIMMABLE TRIDONIC LED // 6W // 700 lm (MODULE) ~500 lm (TTL) // 3000K MAXIMUM OF 20 MODULES PER DRIVER
DIMMING:	STANDARD - NON DIMMABLE OPTIONS - DALI+SWITCH DIM / 1-10V
SUSPENSION:	STEEL CABLES // BRAIDED TEXTILE FLEX // SEAMLESS CANOPY

Rakumba has been producing custom-made feature lighting for the Australian design industry since 1968. Collaborating with designers across a wide range of sectors from commercial to residential, we take pride in our bespoke service, attention to design detailing and ability to deliver on any scale of project.

©2016 Rakumba Lighting Pty Ltd

Rakumba.com